

The logo for UTU News features the letters 'UTU' in a stylized, bold font. The 'U' on the left is blue, the 'T' in the middle is red, and the 'U' on the right is blue. To the right of 'UTU' is the word 'News' in a large, black, sans-serif font.

The Official Publication of the United Transportation Union

REPUBLICAN LEADERSHIP KILLS RAIL RETIREMENT REFORM

“The Republican leadership has insulted every rail worker, and every rail worker’s family, by scuttling the Railroad Retirement and Survivors’ Reform Act, denying us an opportunity that may come just once in a lifetime.” – *UTU International President Charles L. Little*

Does the UTUIA owe you money?

See Pages 6 and 7
for a complete list
of unclaimed benefits

News & Notes

Brochure explains pact

CLEVELAND – All UTU members working for railroad companies which are party to the proposed new national wage-and-rules contract should have received in the mail a brochure by International Assistant President Byron A. Boyd, Jr., explaining the details of the proposal.

If you have not received this brochure and wish to receive a copy, please contact the UTU Public Relations Department by e-mail at “utunews@utu.org” or by telephone at (216) 228-9400 and one will be mailed to you.

Negotiations continue

CLEVELAND – UTU Bus Department Vice President Bernie McNelis reports that contract negotiations are continuing for the UTU-represented workers employed by Cimarron Coach in Texas, and are now underway for those UTU-represented workers employed by Alex Transportation in Washington, Oregon, Texas, Arizona, Kansas and Oklahoma.

Other properties where negotiations are continuing are Renzenberger and Laidlaw School Bus in Riverside and Hesperia, California, McNelis said.

He added that the UTU continues to receive inquiries from many other workers in a variety of occupations seeking UTU representation.

Boda gets board seat

CLEVELAND – Joe A. Boda, Jr., assistant Ohio state legislative board director and member of Local 693 at Brewster, Ohio, has been elevated to fill a vacancy on the UTU Executive Board.

He had been serving as alternate to that board. He replaces Karen Belcher, who resigned the position. The International Board of Directors has elected Michael N. Anderson, assistant state legislative director in California and delegate from Local 1570 at Roseville, Cal., to fill the position of alternate.

UTU general chairpersons endorse proposed contract

SAN DIEGO – United Transportation Union general chairpersons involved in national handling have overwhelmingly endorsed the proposed national rail contract recently announced by the union and the 30 carriers represented by the National Carriers’ Conference Committee.

The general chairpersons who met here last month for their first look at the tentative

See Little Column, Page 4

agreement “embraced it overwhelmingly and recognized the historic opportunities it represents,” UTU International President Charles L. Little said.

“I am pleased to present a progressive package without any givebacks,” Little told the gathering of general chairpersons, “and very pleased to report that we have accomplished our goals in this round of bargaining by creating a new and better pay system that opens the door to the future by securing equal pay for equal responsibility.”

As per the provisions of Article 91 in the UTU Constitution, each general chairperson had until October 30 (after this issue of *UTU*

Ratify pact by telephone

CLEVELAND – UTU members voting on the proposed national contract will find the process fast, simple and more convenient, thanks to the use of an electronic voting system conducted via a simple toll-free telephone call.

The UTU Board of Directors last month approved the use of the voting system while carrying out the mandates of Article 91 of the UTU Constitution. Those provisions require that the board “**establish and publish procedures for the conduct of referendum elections, which shall thereafter**

Continued on page 8

News went to press) to submit questions about the contract offer.

The UTU National Negotiating Committee, headed by Assistant President Byron A. Boyd, Jr., will then consolidate the submitted

Continued on page 8

MTA strike over; contract ratified

LOS ANGELES – The third-longest transit strike in Los Angeles history is over.

Some 4,400 UTU members employed by the Los Angeles County Metropolitan Transportation Authority have overwhelmingly ratified a new three-year pact with the agency.

The deal was sealed during a marathon all-night bargaining session brokered by the Rev. Jesse Jackson, who literally ran from room to room in the Pasadena Hilton, shuttling offers and counteroffers back and forth, trying to get all sides to reach an agreement.

The pact was embraced by bus and rail operators eager to get back to work and by MTA directors, who said it still allowed them to achieve the \$23 million in savings from bus and rail operators they had sought from the outset.

Most importantly, the UTU and the other union members who honored its picket lines

Continued on page 8

Republicans kill retirement bill

WASHINGTON, D.C. – In a display of partisan politics at its worst, the Republican leadership has allowed a small handful of right-wing Republican leaders to kill any chance for passage of the Railroad Retirement and Survivors’ Improvement Act of 2000 this legislative session.

“After 10 months of hard work, a handful of conservative Republicans, primarily senators Phil Gramm (Tex.), Assistant Majority Whip Don Nickles (Okla.) and Pete Domenici (N.M.), ignored the pleas of Sen. Larry Craig (R-Idaho) and others and killed Railroad Retirement reform for this session,” National Legislative Director James Brunkenhoefer said.

“Almost 40 Republican senators had indicated support of these improvements,” Brunkenhoefer said. “But given a choice of standing with the more than 50,000 widows and widowers who needed additional benefits and the many thou-

Continued on page 9

Around the UTU

News from around the U.S. and Canada

Local 4, Charny, P.Q.

Along with Local 414 in Montreal, P.Q., the members recently commissioned the creation of a new UTU flag in French, said Secretary and Treasurer **Louis-François Garceau**.

Local 23, Santa Cruz, Cal.

Members working for the Santa Cruz Metropolitan Transit District are backing the candidacy of fellow 11-year member **Bonnie Morr**, who is running for Santa Cruz City Council. The active local is making a conscious effort to get involved in local government. **Wally Brondstatter** and **Jeff North** already serve on the Major Transportation Study, an advisory committee planning the next two decades.

Local 343, Hamilton, Ont.

Members of the local recently exchanged information of common interest with members of Local 990, Winnipeg, Man., when Local Chairperson (Yard) **Scott Montani** attended L-990's regular monthly meeting. Meanwhile, the local has received word from CN Rail that it will be getting a long-awaited assignment back into Hamilton.

Local 898, Boston, Mass.

UTU's mobile education and training facility, *Membership I*, recently made a visit and drew about 40 members and nearly as many curious bystanders, who heard operator **Dick Peterson** describe the vehicle's capabilities. New assistant conductors used the onboard classroom to view a FELA video and heard a speech by UTU Designated Legal Counsel **Bob Naumes**, said **Roberta Ward**, who ran a voter registration drive from the vehicle.

Local 980, Enderlin, N.D.

Members working on the Soo Line did their part to push for passage of H.R. 4844 (The Railroad Retirement and Survivors' Improvement Act of 2000) by distributing prepared letters at the Harvey and Enderlin, N.D., terminals, according to Local Chairperson **Gary Wendel**. Working with State Legislative Director **John Risch**, letters also were published in the local newspaper, letting retirees know the local would mail or fax their letters free of charge. More than 200 responses from lawmakers resulted.

Local 982, Syracuse, N.Y.

Members honored three retiring engineers on September 25 by presenting plaques to retiring Local President **George Grimshaw** (33 years of service), **Donn Osterhout** (41 years of service) and **Vann Dristle** (36 years of service). Helping bestow the honors were Treasurer **Tom Hoey** and Vice President **Mike Clubine**, according to Local Chairperson **Dave Murphy**.

Local 990, Winnipeg, Man.

The local hosted the Fifth Annual **Brent Armbruster** Memorial Golf Tournament on September 15 at the LaVerendrye Golf Course, according to Local President **Ioanis Papadopoulos**. The event, named after a fellow member who was killed in a tragic accident in Symington yards in 1986, raised more than \$400 for the Injured Workers' Association of Manitoba. Deserving special recognition for organizing the event are Local Vice President **Ralph Jackson** and Alternate Delegate **Lionel Ethier**.



Local Chairperson **Lloyd Nelson**, a member of Local 486, Glendive, Mont., missed the annual family picnic he helped arrange when he and other members of the Army National Guard's Battalion 190 out of Billings, Mont., were called on to lend a hand fighting wildfires.

BNSF engineer battles wildfires

In 1996, Local Chairperson **Lloyd Nelson** played a major role in re-establishing the annual family picnic held in Forsyth, Mont., for members of Local 486 (Glendive, Mont.), but he couldn't attend this year.

Instead, Nelson, a locomotive engineer employed by BNSF, was one of some 10,000 who battled the blazes consuming an estimated 645,300 acres in Montana during the worst fire season in decades.

Nationwide, fires burned more than 6.6 million acres this year. To meet the challenge, the armed services, as well as foresters and assorted personnel from the U.S., Canada, Puerto Rico, and even New Zealand, were called on to help quench the flames.

E-7 Sergeant First Class Nelson, a member of the Army National Guard, Battalion 190, out of Billings, Mont., was just finishing his regular weekend of service when he got the call.

"Montana Gov. Marc Racicot declared a state of emergency," Nelson said. "We received a three-day training course from the U.S. Forest Service, were broken down into 20-man teams, and I went to work fighting fires for the first time in my life near Helena, where about 80,000 acres were burning. I fought fires near Boulder, Townsend, and other areas from August 10 to the 24th."

The state's Soldier of the Year in 1998, Nelson said serving the country is something of a family tradition. "I've just completed my 20th year in the Army National Guard," he said. "My dad joined the guard in 1955, my brother's got 15 years in, my younger sister has 13 years in, and my other sister served four years in the regular Army."

With two boys, ages 10 and five, a seven-year-old daughter, a railroad job and commitments to the guard, Nelson gives credit to his wife. "I owe Kim a lot," he said. "Especially with me being gone so much, it really takes a lot to hold down the home front."

Local 1252, Fresno, Cal.

A 25-year-old tradition continued when members co-hosted a UTU/BLE family picnic September 23 at the Wonder Valley Ranch Resort, said Secretary **Donald L. Heffernan**, who expressed gratitude to the designated attorneys and others who made the day possible.

Local 1405, St. Louis, Mo.

Members working for Norfolk Southern held

their annual "Old Timers' Banquet" on September 26, sponsored for the ninth consecutive year by Designated Legal Council **Lance Callis**. Among those attending were UTU International General Secretary and Treasurer **Paul C. Thompson** and Assistant General Chairperson **Rex Grice** (GO-687).

Local 1440, Staten Island, N.Y.

By a vote of 154 to 7, members ended a three-year wait by ratifying a new contract delivered by General Chairperson **Mike Canino** on October 16, according to Vice General Chairperson **Bob Bilello**. The 63-month contract includes a substantial wage increase, said Local Chairperson **Lou Russo**, as well as improvements from a rich fringe benefit package that includes sick leave pay, a disability allowance, longevity pay, and much more.

Local 1462, Boston, Mass.

Members held a joint meeting with members of Local 262, Boston, where representatives from Tufts, Aetna, UTUIA and the Railroad Retirement Board were on hand, said Local 262 Local Chairperson **Tom Driscoll**. Also attending were National Legislative Director **James M. Brunkenhoefer**, Assistant National Legislative Director **James A. Stem** and State Senator **Steve Tolman**.

Local 1473, Boston, Mass.

Members are mourning the passing on October 8 of **Thomas A. Casey**, a lifelong railroader and father of fellow Amtrak conductor and Massachusetts/Rhode Island State Legislative Director **George T. Casey**. The elder Casey, an Army veteran, retired in 1970 following 44 years as a carman with the Boston & Albany; New York Central; Pennsylvania Central, and Conrail. He was a past president of the Transport Workers Union.

Local 1518, Indianapolis, Ind.

Two active members with combined service records totaling 107 years were honored with brass lanterns at the local's recent annual banquet, said Secretary and Treasurer **J.R. O'Neil** and Local Chairperson **C.R. Smither**. On September 18, **Kenneth Conatser** marked 50 years of service, and on December 18, **Freland J. Stark** will start his 58th year on the rails.

Local 1567, Corbin, Ky.

Thanks to a \$100 donation from the local in seed money, a soccer complex is taking shape in town as a memorial to a woman, Deborah Grega, and her son, Sean, who were killed when logs rolled off a truck and into their car. In addition, the local recently made a generous donation to the family of a city worker killed while on duty, according to Secretary and Treasurer **Donny D. Head**.

Local 1933, Washington, D.C.

Being prepared paid big dividends recently for Virginia Railway Express conductor **Bruce Thompson**, who took a two-day course a year ago and learned CPR and emergency response techniques from fellow conductor and PRE-PARE trainer **Corky Price, Jr.**, also of Local 1933. On September 15, Thompson received a call from fellow conductor and local member **Steve Rasch**, alerting him to a passenger in distress. Learning the passenger was choking on food, Thompson tried the Heimlich maneuver, and on the third attempt, was successful, averting a tragic outcome.

Members "Join Hands" for a better world

CLEVELAND – UTU/UTUIA members helped bring young and old together, and at least for a day, turned the nation into a single, caring community by joining with other fraternalists and service organizations to make the first Join Hands Day a successful and memorable event.

Held on June 17 and planned to be repeated annually, the event constitutes a new national day of voluntary service that brings the generations together "so we can really make this world a better place," said UTU/UTUIA Fraternal Coordinator Sandy Kranick.

Created by the National Fraternal Congress of America (NFCA), Join Hands Day operates in conjunction with the Points of Light Foundation and the Volunteer Center National Network.

"I was very pleased with the success and level of participation on the part of UTU/UTUIA members," Kranick remarked, "especially considering that this was the first time for the event." The next opportunity to participate will be on Saturday, June 16, 2001, Kranick added.



Members of UTUIA Unit #1 (Cleveland, Ohio) take a break from their landscaping project at a battered women's shelter on Join Hands Day.

She estimated some 215 adults and 52 children associated with UTU/UTUIA took part in the first annual event.

Among the projects tackled by UTU/UTUIA participants:

- The Porter County, Ind., 4-H Music Project, in which six youngsters joined with several dedicated parents and Glen S. Johnson of Local 168 (Chicago, Ill.), volunteer superintendent of the project, to entertain the senior residents at the Pines Village retirement apartments in Valparaiso, Ind.;
- Local 597 (Des Plaines, Ill.) and the Heritage Presbyterian Church in Carol Stream, Ill., joined together to collect 120 pounds of food for the People's Resource Center in Wheaton, Ill.;
- UTUIA Unit #11 (Battle Creek, Mich.) joined with Neighborhood, Inc., in Battle Creek to tear down and remove debris from a collapsed garage. The group is now looking for ways to raise money for a food bank run by volunteers from a local church;
- Local 1929 (E. St. Louis, Ill.) involved all the crafts from the Alton & Southern to organize a clothing drive to benefit the Church of Christ in Fairview Hts., Ill. The overwhelming response resulted in expansion of the effort into a two-day event;
- Members and their families associated with Local 243 (Fort Worth, Tex.) held a blood drive and raffle at their annual picnic, raising \$600 to

battle cystic fibrosis;

• Quick-thinking and flexibility saved the day for those associated with UTUIA Unit #17 (Philadelphia, Pa.). The group had planned to raise money for charity by setting up a car wash. When rainy weather threw cold water on their plans, they quickly put together a raffle that raised \$500;

• UTU/UTUIA members in Montclair, N.J. partnered with the senior residents of Montclair House to plant flowers around the trees along Bloomfield Avenue in Montclair; and

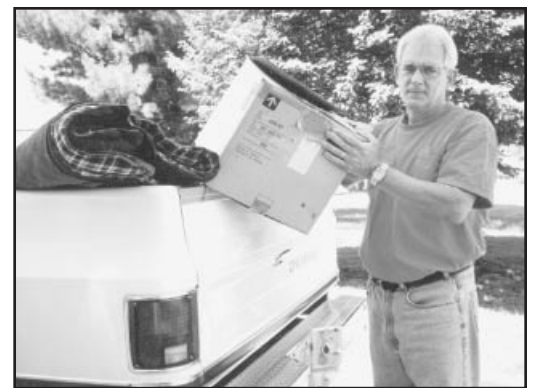
• UTUIA Unit #1 (Cleveland, Ohio) joined with the Marine Corps and volunteers from Camp Cheerful, a facility for young handicapped campers, to clean the camp's cabins. They also donated \$1,500 to help three youngsters enjoy a full week at the camp, became proud sponsors of one of the cabins, and supported a pancake breakfast that raised funds for the camp. The group also supplied volunteers who landscaped, painted, washed windows, and otherwise spruced up a battered women's shelter; began an ongoing effort to collect business clothing for Dress of Success, an organization that clothes women in need of a helping hand, and held a social and a raffle to raise funds for local charitable organizations.

"We all learned from our first year of doing this," Kranick pointed out. "Probably the biggest comment we got from participants is that more lead time would help members gear up and get the word out to young people through the schools, churches and other social organizations."

Kranick said that official reporting forms for the 2001 event aren't yet available, "but it's just about the right time to start making plans."



Debbie Peterson plays piano for the residents of the Pines Village Retirement Apartments in Valparaiso, Ind., where Glen S. Johnson of Local 168 helped coordinate a Join Hands Day event with the Porter County, Ind., 4-H Music Project.



Local 1929 (E. St. Louis, Ill.) President Bill Sulentic handles another load during the clothing drive the local sponsored that turned into a two-day event.

Bus Department

By Bernie McNelis

New technology, new problems

Technology in transportation is not around the corner; it is here to stay.

Most of us, whether members of the Bus Department or not, are aware of such technology as the Global Positioning System (GPS). GPS tells you where you are and how to get to where you want to go. It's pretty simple, not intrusive and is used on the UTU's *Membership I* motorcoach.

Now comes telematics, the ability to know about the status of a vehicle and analyze the operator and other employees. Telematics was created to help move passengers more efficiently and safely. Telematics provides the ability to communicate between vehicles, infrastructure and the managers responsible for running the transportation systems.

For example, it will be used to provide instant estimated arrival information for passengers waiting for a bus, or to contact the operator regarding traffic conditions.

Some say telematics will increase productivity, control over work time, and workplace discipline. Some say telematics also will give the employer complete control over the employee's workday.

How far will the employer go to use this technology? Will it show if the driver is braking too hard, following too closely, being too hard on the clutch, starting off too fast, stopping too suddenly? These are all examples of what we may face under telematics.

As these technologies are put in effect, we must protect our members. Negotiations must focus on how technology will be used in discipline, confidentiality concerns and possible subcontracting out of work. If the company saves money, will our members see some of it through better pay, profit sharing or through other benefits? We must be vigilant.



Yardmasters

By Don Carver

I am voting for ratification

A tentative agreement has been reached on the national agreement. International President Charles L. Little recently called a meeting of all general chairpersons covered by the proposal. Following explanation of the proposal by Assistant President Byron A. Boyd, Jr., and a question-and-answer session, the general chairpersons gave an overwhelming vote of support.

The general committees are preparing questions that must be clarified. When these questions have been answered, a copy of the complete proposed agreement will be mailed to each member covered by the proposal for a membership ratification vote. We urge you to study the agreement. I recommend its ratification and I firmly believe you will agree after you have had an opportunity to study the proposal.

Yardmaster James R. Reid, Jr., has retired after 46 years of service. Jim began his career on the Pittsburgh & Lake Erie (P&LE) Railroad on June 28, 1954, and established seniority as a yardmaster March 28, 1965. During the last 22 years Jim was a yardmaster representative. Between 1978 and 1993 he held the offices of P&LE local chairperson, P&LE general chairperson until the P&LE was sold, and Three Rivers Railway general chairperson after the sale.

Following the CSX purchase of Three Rivers, Jim was elected CSX (B&O) vice general chairperson and held that office seven years prior to retirement. Representing the yardmaster craft during the final six years of the P&LE was a trying and seemingly insurmountable task, but he succeeded in securing the best for his membership. Many long days and late nights were spent in the process. We wish the best for Jim and his family in a long and happy retirement.



UTU News

Charles L. Little, International President

Byron A. Boyd, Jr., Assistant President

Paul C. Thompson, General Sec./Treas.

James Brunkenhoefer, Nat. Legislative Dir.

Standing together, united

On September 16, more than 4,300 UTU members working for the Los Angeles MTA found all possibilities for a contract settlement had been exhausted. In the words of General Chairperson James Williams, they "had gone the last mile," and the bus and commuter train operators decided they had no other recourse than to use labor's ultimate weapon and put up a picket line.

But a strike, like a chain, is only as strong as its individual elements. As one UTU member working in the rail industry noted, a strike calls for the ultimate sacrifice of the individual's ego. In a noble gesture that goes against the grain of individual self-interest, the worker must set aside his or her own concerns and band together with fellow workers to gain what's best for everyone collectively.

The MTA strike would eventually turn out to be the longest in Los Angeles in two decades. But a turn of events on October 2 almost short-circuited the strike and threatened the solidarity that had characterized the action. On that day, the leaders of two other labor unions that had honored our strike gave their members approval to cross the UTU picket line.

Of the nearly 2,000 mechanics who could have gone back to work and earned a sorely needed paycheck, only eight crossed the line.

Perhaps it was self interest that motivated so many to hold the line. The UTU wasn't the only union looking to secure a new contract with the MTA, and the mechanics may well have realized that the support of UTU workers might come in handy in the near future.

Or maybe many had been through strikes before, and they realized something that apparently had been overlooked by those who crossed the UTU's picket lines in 1994 on the Soo Line. Memories are long, and sometimes unforgiving.

Regardless of their motivation and their leaders' words, actions speak volumes. Those individuals who continued to respect our picket line ultimately helped bring about a settlement, and they deserve our gratitude and respect.

Standing together, the workers on the MTA offer us all an inspirational lesson in the value of unity.

Well worth the wait

Last month, we announced the UTU and the nation's major freight railroads had reached a tentative deal for a new collective bargaining agreement.

We said the agreement would cover train and engine service employees, and yardmasters, who make up nearly a third of the railroads' work force, and about 95% of the nation's Class I operating employees. We noted this was the first agreement to be reached between the railroads and any of the 13 standard labor unions taking part in the round of bargaining that began a year ago, and that details would be forthcoming.

That's all we said, and all we could say.

Since then, the phones have been ringing with inquiries from UTU members, who have every right to be curious about a historic contract that will have a major positive impact on their occupations and on the security of their families.

Members want to know what's in the contract, how it affects them, and where its provisions come into play. Most of all, they want to know when they can see the document for themselves.

We knew when we had a tentative agreement in hand, word about it would travel fast, some of which would be accurate and some of which would not.

The members of the UTU National

Negotiating Team, headed by Assistant President Byron A. Boyd, Jr., agreed with me that it was important for UTU members to learn as soon as possible, and directly from their union, that an agreement had been struck.

UTU members not only have a right to timely knowledge of events that affect their lives, they also need and deserve reliable facts.

What they don't need is a premature preview of an unfinished document, especially if it comes from a third-party source that might lace the news with rumors, misinterpretations, half-truths, and perhaps even deliberate disinformation.

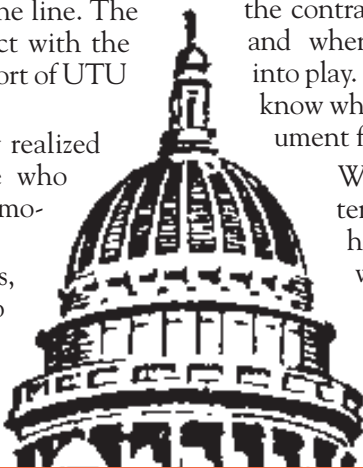
Our UTU Constitution tells us this is an unfinished document. As such, it would be inappropriate, irresponsible, and a disservice to UTU members to promote or publish the agreement's contents until the provisions of Article 91 have been carried out.

We have already met with the general chairpersons whose committees are affected by the agreement, and they have submitted questions, as prescribed by Article 91. After the UTU Negotiating Team meets with the railroads' negotiators and establishes answers that will apply to the contract, we will have solid, reliable information, and a finished document, to distribute to UTU members for ratification.

That time is drawing near. But until then, I can only assure you the contract will be well worth the wait.



By
Charles L. Little



WASHINGTON WATCH

By James Brunkenhoefer

You can't amputate your way to better health

Dear Railroad CEO:

I recently received a report from Morgan Stanley, some of the best money guys on Wall Street. It was an overview of internet strategies by railroad companies. It made for very interesting reading.

One part of the report covered what your customers expect from you. I am afraid that, on a scale of one to ten, your industry did not make a passing grade.

In the Morgan Stanley report, BNSF customers rated the carrier a 5.4 out of 10 on their e-commerce service. CN/IC got a 5.6, Canadian Pacific 5.2, CSX scored 5.3, KCS 4.6, NS 4.7 and UP 5.3.

All of these scores rank far below your trucking competitors. It seems as if your customers like what they get from the truck lines a lot better than what they get from you. It appears that each railroad is very proud of their individual system. They resist efforts to have a common system throughout the industry. Heaven forbid that your competitor, another railroad, may gain a little information. Someone better bring in the coffee to wake you up, because your competition is not another railroad, it is e-commerce-friendly truck companies.

In today's competitive world, you are getting about 10% of the freight transportation dollar. Roll over with your big executive chair and look out the nearest window and count the trucks that go by. You better bring a calculator because your fingers and toes will not do it. The shippers know that not only can the trucking company quote a rate, they can also promise delivery. Not only that, the shipper can find exactly where his shipment is at any given time. You see, he designs an e-commerce system that is customer friendly. You designed a computer system to cut off clerks. At the rate you guys resist new ideas and cut costs, there soon won't be any

industry left.

I am aware that some of you are attempting to build consumer-friendly websites. Customers will be able to make inquiries through this site. Even so, they will not be able to get either a price or a definite commitment of when their freight will be delivered.

While the rest of the world is using space-based global positioning satellites, we are stuck with old trackside boxcar scanners. These scanners are not much better for communications than two tin cans and string. When you finally decide to use the GPS method, your customers can find out just exactly, within a few feet, where their shipment is, how fast it is moving and exactly when it is expected to get there. Heck, most of your trains are wandering around North America hauling a bunch of no bills, causing higher fuel consumption and higher costs and the darn cars end up in the wrong place. But look at the cost savings that you've made from the clerks that you have cut off.

Do you really think that your customers are going to stay with you when they can't find out where their shipments and equipment are? The reason that they can't find out is because you don't know yourself. Most customers would ship with you if you could just get the shipment there consistently. It would be better if you just told the truth about what you can't do, so that the customers can make their plans, rather than counting on you to give them inaccurate information. That just makes them angry.

We have always hoped that you treat your customers better than you treat us. The difference between them and us is that we stick with you and they don't. We are ready to help move this industry into the 21st century. We are ready to help do what the Wall Street money people tell us needs to be done. You must do what we have done and come to the realization that this industry is going to be saved, and this industry's bottom line will increase only when the top line increases, not simply through cost cutting. You cannot amputate yourself to health. You must grow.

State Watch

News from UTU State Legislative Boards

Missouri

On Thursday, October 5, State Legislative Director **W. Larry Foster** joined the late Missouri Governor Mel Carnahan as he signed a proclamation declaring October 16 as Railroad Recognition Day throughout the state.

The purpose of the proclamation was to urge all citizens to appreciate the vital role that the railroad system plays in Missouri's economy and transportation system.

The proclamation read, in part:

"Whereas, the railroad continues to make significant contributions to our state's economic stability and is crucial to the prosperity of countless Missouri businesses; and

"Whereas, from the day the first railroad spike was driven, railroad workers have kept Missouri moving and have enabled our state to become a major participant in both the American and global marketplaces;

"Now, therefore, I Mel Carnahan, Governor of the state of Missouri, do hereby proclaim October 16, 2000, to be Railroad Recognition Day."



The late Missouri Gov. Mel Carnahan, center, shakes hands with Missouri State Legislative Director W. Larry Foster, left, as he presents Foster with a proclamation declaring October 16 as Railroad Recognition Day in the state. The two were joined by George Wisdom (L-226), vice president of the National Association of Retired and Veteran Railway Employees.

California

Governor Gray Davis signed into law a bill that requires the Los Angeles County Metropolitan Transportation Authority to abide by all existing labor contracts should the county decide to divide the system into smaller transit zones in the future.

The bill, S.B. 1101, erased one of the most

contentious issues facing UTU-represented employees during their month-long strike against the LACMTA.

"The governor's decision to sign this bill into law shows what labor can accomplish when we work together. It also shows what we can accomplish through your support of TPEL," said UTU Legislative Director **J.P. Jones**.

"We are so pleased the governor signed [the legislation]," added LACMTA General Chairperson **James Williams**.

The signing may have put to rest attempts by various groups to form a new transit zone among a number of San Fernando Valley cities.

Idaho

Legislative Director **Gary Farris** has acknowledged the efforts of U.S. Senators Mike Crapo and Larry Craig, and Rep. Mike Simpson, in their efforts to pass legislation favorable to the members of the UTU.

Senator Crapo introduced to Congress the "cramdown" legislation that would prevent railroads from bypassing agreements made with labor unions in the event of rail mergers and was the first Republican senator to sign a letter of support for H.R. 4844, the Railroad Retirement and Survivors' Improvement Act of 2000.

Rep. Simpson, a member of the House Transportation and Infrastructure Committee, also was an early supporter of H.R. 4844 and was a co-sponsor of the bill.

Craig, who also supported H.R. 4844, said in a letter to Farris: "I applaud the membership of the UTU for the important role it played in developing a sensible plan to cut taxes and modernize" the Railroad Retirement system.

"We wish to thank everyone who has supported legislation favorable to UTU members, including retirees and widows who have written letters and made phone calls to members of Congress in support of our legislative efforts," Farris said.

Indiana

The Indiana Legislative Board had the honor of presenting UTU member **Howard Platt** (L-1548) with the "Sagamore of the Wabash" award on behalf of Indiana Governor Frank O'Bannon.

The award is one of the most prestigious decorations given by the state of Indiana and is



Pictured, from left, are UTU members Richard "Panama" Everhart (L-1518), K.O. Edwards (L-744), Howard Platt (L-1548), Thomas E. Hensler (L-490), James E. Carrico, Sr. (L-333), Bruce Babbitt (L-298) and Steven Filbert (L-1620). Platt was presented with the "Sagamore of the Wabash" award from Indiana Gov. Frank O'Bannon and a UTU brass lantern from International President Charles L. Little.

presented to citizens who have provided great service to the state, said Legislative Director **James E. Carrico, Sr.**

The board also presented Platt with a UTU brass lantern on behalf of International President Charles L. Little, who in a letter thanked him for his dedication to unionism beginning with his days in the Brotherhood of Railroad Trainmen.

Platt received the award at a luncheon provided by the designated legal counsel firm of Hoey, Farina and Downes.

Iowa

Legislative Director **Pat Hendricks**, on October 16, received from Iowa Governor Thomas Vilsack a copy of a letter sent to President Clinton declaring the governor's support for the Railroad Retirement and Survivors' Improvement Act (H.R. 4844).

The letter read, in part: "The entire Iowa Congressional delegation has committed support for this legislation. The bill received strong bipartisan support as evidenced in the 391-to-25 vote for passage in the House of Representatives. More than 80 Senators have signed a letter supporting its enactment..."

"I strongly encourage you to voice support for this excellent legislation by speaking to the Senate and House leadership to let them know that passage of this legislation is a priority for your Administration."

"I hope this is helpful in getting approval for the improvement act," Vilsack wrote in a letter to Hendricks.



Brunkenhoefer welcomes Walesa

UTU National Legislative Director James M. Brunkenhoefer, left, recently met with Lech Walesa during a Polish labor rally held at the District of Columbia's Union Station. Walesa became one of the world's most well-known labor figures as the leader of Poland's Solidarity movement in the early 1980s.

Safety, security topics for legislative directors

WASHINGTON, D.C. – The UTU's National Association of Legislative Directors (NALD) held its quadrennial reorganization meeting September 17 in Washington, D.C., to elect officers and establish its legislative agenda for the near future.

Michigan Legislative Director David Brickey was elected chairperson and W. Larry Foster of Missouri was chosen as vice chairperson. Also elected were New Jersey Legislative Director Dan O'Connell as secretary and Fran Marceau of Montana as treasurer.

The safety and security of UTU members topped the association's agenda. Discussion centered on the passage of H.R. 4844, the Railroad Retirement and Survivors' Improvement Act, van-service transportation and hours of service regulations.

"Our first order of business was discussing how to protect the livelihood of our members," Brickey said.

Besides the approval of H.R. 4844, Brickey said the group focused on the need to enact legislation to regulate the van-service providers which transport rail workers.

"I hope we can establish laws in every state, similar to the legislation

Continued on page 9

Does the UTUIA owe you money? Check below for your name

UNCLAIMED BENEFITS

Local	Name	City & State	Amount
478	Abbott, Leslie W., RI		69.00
448	Adams, William H., Hawthorne, CA		2.15
337	Adkins, Robert, MO		41.00
1438	Allen, Thomas W., Detroit, MI		14.44
18	Ameling, Roy H., Tucson, AZ		5,141.83
	Anderson, James, Fairlawn, NJ		98.04
414	Anderson, Lewis J., St. Louis, MO		25.00
214	Anthony, Robert B., MD		19.00
97	Auman, Kenneth C., CA		143.55
1033	Austin, Beverly K., Lithonia, GA		22.14
86	Ballew, Robert T., WY		66.00
747	Barnes, Thomas A., Beech Grove, IN		499.13
94	Bartlett, Oscar, Nogales, AZ		44.00
630	Bayer, Robert E.		559.69
73	Berard, Philip, MA		5.95
826	Blackwell, William W., SC		26.00
215	Bloom, Theodore K.J., MD		44.00
1965	Bluford, Carl M., Lake Jackson, TX		7.75
448	Blundell, Joseph W., Los Angeles, CA		6.90
1461	Boling, Sara E., Dumfries, VA		1.13
345	Bray, Everett J., Fort Smith, AR		22.00
261	Bristow, Ronald G., Indianapolis, IN		2.67
281	Brown, Sindee L., Lake Geneva, WI		5.93
45	Bullock, George S., Bald Knob, AR		.60
741	Burge, George E., NC		12.87
550	Burke, Jessie T., So. Norfolk, VA		21.33
330	Burris, Edmond V., MO		42.00
631	Butler, Brad A., Ridgeley, WV		35.78
566	Busch, William H., Calwa City, CA		55.00
	Cady, Donald E., Kansas City, MO		48.68
507	Callahan, Joseph E., MA		37.22
1205	Calloway, Ron G., Corpus Christi, TX		10.85
506	Calvitt, Charles A., Houston, TX		30.50
285	Carpenter, Carlos L., E. Hampton, CT		36.50
1524	Carroll, Jeffrey J., Houston, TX		9.25
430	Carter, Thomas H., MD		29.50
1044	Carver, Grover T., Kansas City, KS		1,000.00
315	Case, George N., Sarasota Spgs., NY		72.00
1762	Chartrand, Daniel B., Mt. Morris, MI		8.11
1563	Christensen Jr., Robt., La Puente, CA		11.82
453	Clark, William F., Baltimore, MD		4.25
517	Clarkson, Edgar W., Williamson, WV		74.50
1524	Coker, Brent W., Houston, TX		24.08
304	Collins, Walter N., Little Rock, AR		22.94
383	Combs, James H., Louisville, KY		23.33
16	Conrad, Joseph A., Jr., Terre Haute, IN		42.00
101	Conroy, Michael J., Buffalo, NY		125.00
205	Cook, Billy T., Springfield, AR		36.52
1563	Cook, James E., La Puente, CA		11.82
1775	Cook, Sharon G., Salt Lake City, UT		31.82
616	Cosby, William H., NY		36.00
1502	Cross, LaGuardia, Miami, FL		10.02
320	Cuellar, Armando, Saginaw, MI		3.35
14	Custard, Samuel E., Vincennes, IN		67.00
1770	Darling, Harry B., Los Angeles, CA		250.00
260	Davis, Arthur A., Sacramento, CA		41.00
100	Davis, George W., Nashville, TN		43.27
733	Dawson, Thomas W., ID		29.84
141	Diehm, Henry A., IN		17.50
840	Doolin, James E., Detroit, MI		10.50
598	Douthit, Squire M., LA		104.00
1405	Drennan Jr., Thomas P., Richmond, CA		12.47
773	Duffy, Paul B., IA		9.85
377	Duffy, Thomas A., Brockport, NY		70.66
376	Ekwall, Charles A., FL		16.00
139	Essary, Walter J., Wickett, TX		119.00
1852	Everett, Anita K., Frostburg, MD		3.35
1852	Everett, Walter W., Frostburg, MD		7.15
388	Fairbairn, Norman P., WI		21.00
912	Field, Russell L., CA		2.36
485	Fifield, Leston M., Somerville, MA		54.00
141	Fisher, Alvin L., Angola, IN		112.50
940	Foley Jr., Jesse J., Fort Worth, TX		2.46
1760	Ford, David A., Taylor, MI		22.35
592	Frail, Peter N., WA		33.70
950	Franklin, Maurice, Memphis, TN		35.57

UNCLAIMED BENEFITS

Local	Name	City & State	Amount
603	Franz, Pamela K., Virginia Bch., VA		70.89
313	Freeman, Craig A., Grand Rapids, MI		9.02
	Freeman, Don H., Lakeland, FL		1,585.43
97	Freeman, Orvel B., Los Angeles, CA		144.50
492	Friedman, Grover, Sacramento, CA		221.46
574	Fuchs, William Edward, Kensett, AR		23.00
685	Funston, Rolla E., Danville, IN		46.00
1548	Garber, Stephen C., Indianapolis, IN		19.94
1368	Gifford, Terry V., Shawnee Miss., KS		16.50
7	Gore, Albert B., Washington, DC		33.00
579	Granger, Glen A., NY		20.03
812	Grazier, Wesley B., CA		4.32
214	Grimm, Earl W., Baltimore, MD		54.00
688	Hale, Arthur, Oklahoma City, OK		29.50
608	Hall, John M., TX		32.72
376	Hardee, Lon, Miami, FL		58.50
214	Hardesty, Joseph, S. Baltimore, MD		12.65
376	Hardin, Marion F., FL		29.00
1034	Harrington, Charles E., Buffalo, NY		13.00
508	Hawkins, Jesse E., Smithville, TX		7.62
	Hayes, Marvin, Deer Park, TX		13.00
91	Heffington, Marshall B., Brisbane, CA		72.00
165	Hess, Dennis D., Baltimore, MD		30.06
448	Hoen, Robert A., CA		22.56
608	Holloway, Daniel W., CT		117.00
193	Holmes, Jesse F., Portland, OR		48.00
321	Holmlund, David, CA		6.95
598	Homer, Charles, NY		3.51
221	Horton, Charles F., Little Rock, AR		300.00
1563	Houze, Casandra, W. Covina, CA		2.34
610	Howard, Robert, Arnold, MD		237.70
68	Hunt, Raymond H., UT		15.98
48	Iensenberg, John Berkeley, Topeka, KS		258.04
215	Jackson, Richard Edgar, Albany, NY		24.00
1812	Jackson, Ronald D., Los Angeles, CA		40.58
606	Jewell, Charles M., Providence, RI		517.35
610	Johnson, Delores, Baltimore, MD		4.40
779	Johnson, Joseph L., AR		32.00
292	Johnson, Milton C., E. Syracuse, NY		942.49
1186	Jones, John P., Gary, IN		15.49
265	Jones, Ray, Inko, ID		9.00
1607	Jordan, Clyde E., Pasadena, CA		11.82
984	Justice, Edward R., Baltimore, MO		12.98
731	Kelly, Frank, Weehawken, NJ		26.00
296	Kennedy, Lee M., WI		37.50
1472	King, Louis, Gretna, NY		1,544.26
663	Kirby, Charles D., Los Angeles, CA		13.00
79	Kirkman, Albert W., Cherokee, IA		44.60
460	Kountz, Charles L., Baton Rouge, LA		51.15
376	Krueger, Alfred G., FL		43.50
363	Kryger Jr., Olaf H., New York, NY		11.82
794	Lagle, Marion K., Stockton, CA		12.60
1438	Laman, Gary P., Detroit, MI		14.50
582	LaMartine, Niels J., IN		25.00
535	Laney, Gordon O., Valdosta, GA		123.47
934	Lawhon Jr., Joseph C., Charlotte, NC		80.00
1548	Lawson, Jerry W., Indianapolis, IN		9.02
438	Lee, Jack D., MD		39.30
743	Lewin, Bert, IN		54.00
369	Lewis, Thomas H., KS		6.50
1438	Long, Ronnie G., River Rouge, MI		9.27
535	Lowery, Kenneth P., Macon, GA		9.04
167	Lowman, Robert K., Portland, OR		26.00
57	MacNeal, Edwin C., MA		36.00
394	Macomber, Douglas J., Niverville, NY		239.35
906	Madere, Sim, La Place, LA		52.50
309	Markin, James W., NY		30.00
543	Marsh, Ernest G., Patterson, NJ		121.50
1663	Marshall, Richard L., Indianapolis, IN		11.82
77	Martin, Daniel C., Indianapolis, IN		702.74
454	McDonald, George L., MI		71.67
113	McDuffee, Howard W., WA		52.85
307	McKinnon, Edwin L., E. Tethford, VT		15.00
1403	McQuillan, Jeffrey S., Raymore, MD		7.57
	Melton, Melvin F., Springerville, AZ		84.27
823	Milam, Otis L., Lakeland, FL		76.50

Listed on these pages are the names of participants in the United Transportation Union Insurance Association (former ORC&B, the BRT and the BLF&E) who have unclaimed benefits in the amounts shown.

Local, lodge or division numbers, where available, are shown. Local or lodge numbers of some participants are lacking because of data lost through mergers, transfers, closings and other circumstances. In most cases the last known city and state are included.

If your name is listed, or you know of any of these persons, their whereabouts or their lawful heirs in case of death, you should immediately get in touch with General Secretary and Treasurer Paul C. Thompson at the UTU International, 14600 Detroit Ave., Cleveland, OH 44107-4250. Benefits may be due upon receipt of proper proof.

UNCLAIMED BENEFITS

Local	Name	City & State	Amount
1361	Milious, Frederick R., New Haven, CT		90.28
364	Miller, John H., Memphis, TN		51.00
998	Miller, Walter Scott, Maryland, MD		173.13
949	Milligan, Betty K., Sherman, TX		7.87
356	Mills, Carl L., New Castle, DE		4.55
46	Mills, Marcia K., Reno, NV		440.00
321	Mock, Harry E., CA		92.30
407	Montgomery, Charles F., Seattle, WA		66.50
808	Moore, Robert L., Tracy, CA		39.50
1532	Moretine, Brenda K., Kansas City, KS		2.98
97	Motherhead, Charles C., CA		20.50
296	Nelson, Felix Waldimir, Superior, WI		31.00
260	Newton, Harry B., Fitchburg, MA		539.53
973	Nicoson, Donald L., Terre Haute, IN		9.00
292	O'Brien, Patrick W., Syracuse, NY		9.00
1914	O'Connell, Edmund G., Albany, NY		670.00
73	O'Neil, William J., MA		62.00
	O'Neill, J.L.		11.82
305	O'Neill Jr., Carl W., AR		248.57
327	Osban, Claude W., CA		21.45
430	Page, Genevieve M., Cumberland, MD		3.43
302	Parker, George M., GA		59.33
333	Parks, Tanya L., Lexington, IN		1.79
1445	Pederson, Robert E., NJ		3.61
607	Perkins, Louis J., LA		59.29
911	Peterson, Nels P., UT		48.45
550	Phelps, Eugene L., Blackstone, VA		21.83
214	Phillips, John F., MD		37.00
927	Piatkowski, Glenn, Detroit, MI		15.15
454	Player Jr., Knight, Baltimore, MD		9.02
1477	Pool, John H., Dearborn, MI		11.82
524	Poston, Susan E., Palestine, TX		6.70
146	Pruett, John H., TX		72.60
566	Ramey, Charles L., CA		36.00
1545	Ray, Darel D., Jacksonville, AR		30.74
1031	Ready, Jeannette, Savannah, GA		5.25
517	Richards, Harry A., NY		77.62
1438	Roberts Jr., Van, Detroit, MI 12.24		
243	Robinson, Tommy J., Smithfield, TX		11.82
267	Roddy, W.E., LA		52.00
134	Rogers, Bruce A., Oneonta, NY		1.25
383	Rogers, Lynn A., Louisville, KY		5.69
902	Ross, George W., FL		31.54
1565	Sackman, William A., Reseda, CA		9.00
388	Schultz, John A., WI		25.00
1150	Serbousek, Jennifer, Pierre, SD		3.83
1477	Sesson, Cathryn, Detroit, MI		9.99
1477	Sesson, Joseph, Detroit, MI		23.10
1413	Seward, James J., Jersey City, NJ		262.79
327	Shackelford, Rowzee F., CA		47.00
1120	Shank, Theodore A., Frostproof, FL		177.00
933	Sherrad, Jessica M., Jefferson City, MO		9.80

UNCLAIMED BENEFITS

Local	Name	City & State	Amount
745	Shoemaker, Oscar J., Greenville, SC		31.35
146	Sickman, William, TX		44.00
1607	Siddiqui, Guadalupe, Lawndale, CA		204.15
643	Slaughter, John E., VA		30.00
566	Slover, Vernon R., CA		59.50
321	Smith, Harry C., CA		56.28
600	Smith, James F., Cumberland, MD		134.04
214	Smith, Vernon L., Baltimore, MD		34.00
624	Spacak, Susan W., Baltimore, MD		10.94
	Speller, Misher E., Norfolk, VA		170.00
321	Stalker, Lindley B., CA		68.72
94	Stolp, John A., Webb City, MO		253.54
293	Stoneburner, Paul O., Houston, TX		5.30
890	Stover, Richard G., Delray Bch., FL		2,051.58
1383	Strauss, Michael D., Hobart, IN		127.85
448	Strong, Charles R., Van Nuys, CA		138.00
1762	Strong, Kelvin M., Fenton, MI		6.70
760	Taylor, Clayton D., Jackson, TN		15.95
1790	Taylor, Edd H., Douglas, GA 34.95		
550	Taylor, Hugh B., VA		4.20
730	Thompson, Patrick O., Billings, MT		7.40
302	Thurston, Michael D., Washington, IN		4.01
776	Tims, James R., Denison, TX		9.42
173	Tooker, John B., AZ		295.00
687	Tygett, Herman J., Harlingen, TX		74.25
337	Utter, Laverne, Greenfield Center, NY		10.13
285	Vantine, Otis J., Jackson Hts., NY		700.00
1563	Velazquez, Shirley, Rowland Hts., CA		35.95
230	Wager, George W., NY		119.00
141	Walker, Gene Edwin, Fort Wayne, IN		40.50
1042	Waller, Lyndale R., Choctaw, OK		38.97
566	Walters, John E., CA		89.00
146	Warren, David A., TX		32.00
156	Watson, Steve Wm., Houston, TX		32.20
23	Weddington, Benjamin, OK		23.50
15	Wells, Earl J., TX		21.31
749	Wengert, Arthur F., NV		17.50
432	Westphal, Albert, MD		39.50
909	White, Evans L., MA		96.00
933	Whitmeyer, Raymond A., MO		39.00
794	Whitten, Archie H., CA		128.00
438	Wilkerson, John D., Baltimore, MD		11.80
970	Williams, Frank, Los Angeles, CA		250.00
942	Williams, Walter S., WI		9.07
624	Wilson, Veronica G., Landover, MD		1.00
1762	Winters, Terrie A., Flint, MI 10.77		
792	Wood, Harry E., Los Angeles, CA		37.06
454	Wood, Kathleen S., Baltimore, MD		53.75
	Yarborough, Joan C., St. Paul, MN		18.00
1445	Yeager Jr., Lee N., Roselle Park, NJ		64.72
946	Young, James J., NJ		8.11
1564	Zachary, Curtis D., Los Angeles, CA		11.82

UNCLAIMED LIFE CLAIMS

Local	Name	City & State	Amount	Local	Name	City & State	Amount
1544	Allen, Sidney M., Indio, CA		1,000.00	1343	Lepine, Lawrence D., Fond du Lac, WI		1,814.00
573	Bardill, Fred, Coldwater, MS		3,775.00	446	Lewis, Ralph E., Cheyenne, WY		362.00
386	Barr, Howard N., Baltimore, MD		1,608.00	645	Loch, John H., West Islip, NY		1,195.00
1544	Beard, Jessie A., Los Angeles, CA		1,000.00	832	Lynch, Ambrose J., Superior, WI		1,819.00
847	Bethany, Walter L., Decatur, AL		1,464.00	1617	Malley, James H., Hillside, NJ		1,189.48
	Brumett, Harold R., Holiday, FL		2,208.00	256	Marcoux, Eugene J., Troy, NY		556.83
1202	Buelow, Willard R., Fort Wayne, IN		5,994.00	933	Mason Jr., Thomas R., Baldwin, MO		486.42
211	Butts, Gary R., Otego, NY		1,502.33	1882	Mattson, Donald J., Minneapolis, MN		1,093.00
215	Carricato Jr., Charles, Highspire, PA		5,538.00	1929	Maynard, Wade H., East St. Louis, IL		751.00
1597	Chapin, Frank V., Chicago Hts., IL		2,820.00	1190	McCoy, Ralph T., Cincinnati, OH		4,068.12
1594	Conlin, Bert H., Glen Riddle, PA		1,302.00	813	Melroy Jr., Joseph S		

New contract

Continued from page 1

questions into a single uniform list.

"When the answers to the questions are determined by the negotiating committee and the carriers' representatives, the agreed-upon questions and answers will be made a part of the offer of settlement that will be distributed to UTU members for their evaluation," Boyd explained.

Little said the package presented to the general chairpersons:

- Gives all employees general wage increases;
- Preserves the historical pay components enjoyed by pre-'85 employees;
- Brings post-'85 employees to full parity with pre-'85 employees;
- Guarantees no loss of income or benefits for pre-'85 employees; and
- Preserves the existing basic day and ends the debate over increasing the basic day thanks to a new system of pay computation that includes all the pre-existing arbitrations and allowances.

"We heard what the members said, and we pledged we would eliminate disparity," Boyd said. "That's exactly what this proposed contract does, without giving back one cent we have earned over the decades and without selling one work rule."

Once the answers to the general chairpersons' questions are attached to the document, it will be distributed to the members of each of the crafts covered or affected by the terms of the proposed agreement. A majority of the members voting from each covered craft is required for ratification of the proposed national contract, Boyd said.

Vote by phone

Continued from page 1

be contained as an appendix to this Article; guaranteeing each affected member the right to vote on wages, rules and working conditions."

Accordingly, the appendix to Article 91 reads: **"Agreements shall be sent via first-class mail in an envelope marked 'Important - Agreement and Ballot Enclosed.' The ballot will be a self-addressed, postage-paid post card that will contain space for the member to print name, local number and railroad employer, or a telephone electronic voting system conducted by the American Arbitration Association or similar neutral organization."**

"Electronic voting via a toll-free telephone call will allow all UTU members, regardless of their work or family schedules, to be assured that their ballots have been cast and their voices have been heard," said UTU International President Charles L. Little. "Using this system, available 24 hours a day from any location with a touch-tone phone, members will have the flexibility they need to participate in the decisions that are important to them and their families. Not only will voting be quick and convenient, but I believe the technology will result in greater participation."

The simple instructions for quickly and easily casting a ballot will be included with the copy of the proposed agreement that will be mailed to each member. The use of an individual Personal Identification Number (PIN) and other safeguards will ensure an accurate, efficient, and reliable vote count. Also included will be a toll-free number members can call in the event that they need assistance in casting their votes.

MTA strike

Continued from page 1

were able to fend off the MTA's plans to spin off bus lines into new transit zones without the protection of existing union contracts. They also limited the number of part-time drivers who will be hired by the MTA.

The three-year contract calls for a wage increase that amounts to about 8.3% over three years when quarterly adjustments and a cost-of-living increase are included. The top pay for MTA's most experienced bus drivers will rise from \$20.72 an hour to a maximum of \$22.50 an hour at the end of the contract. Starting salaries for part-time drivers will be about half the top wage scale.

MTA General Chairperson James Williams characterized the 32-day labor dispute as a long, hard fight, but said, "It is time to move on; it is time to mend the fences. It is time to heal all our wounds."

Union spokesman Goldy Norton said the union "didn't get everything we wanted; they (MTA) didn't get everything they wanted. It's a fair settlement. It protects our members."

UTU International President Charles L. Little praised the work done by the Rev. Jackson in getting the two sides together. "Jesse Jackson took time out from campaigning for Al Gore to help mediate this dispute, and he deserves our thanks and appreciation."

Little also praised Williams for his determination to win his members the best contract possible. "James Williams did an outstanding job for his members. He did not back down under tremendous pressure, and proved to be a tough negotiator."

The protracted labor dispute was spawned by the MTA's push to win concessions from its dri-

vers in order to balance its books and prepare for expansion of its rail programs. The agency argued that it faced an estimated \$438-million operating deficit over the next 10 years.

The UTU countered that the agency had grossly overspent on numerous projects and that it would not be allowed to balance its books at the expense of union members.

The agreement does allow the MTA to expand the use of lower-paid, part-time drivers. The contract calls for the number of part-timers to grow from 650 to 980. That total is significantly less, however, than what was proposed in the MTA's "last, best and final offer," which was placed on the table during the final days of negotiations.

The transit agency also agreed to limit the number of its lowest-paid, entry-level drivers to no more than 150 positions, only slightly more than existed before the strike.

"This union has preserved middle-class jobs," Williams said.

The unions persuaded California Gov. Gray Davis to sign a bill that robs board members of one of their prized goals: the creation of lower-cost suburban "transit zones" that would not have to take into account the unions now representing MTA workers. Transit zones can still be created, but MTA labor contracts will follow workers transferred to them. During negotiations, the UTU and other unions gathered representatives of one-sixth of the state legislature to a private meeting in the governor's office in Los Angeles to underscore their concern about the strike.

MTA driver Jack Dedrick, 37, secretary of UTU Local 1608, praised the unity showed by his fellow members during the strike. "I think it showed them that we wouldn't back down. I think they were surprised that we lasted a month."

UTU refutes role in deal asking unionists to cross MTA picket line

CLEVELAND – The UTU played no part in the decision by two other unions last month to allow their members to cross UTU picket lines at the Los Angeles County Metropolitan Transportation Authority (MTA), UTU International President Charles L. Little said.

The Amalgamated Transit Union (ATU) and the American Federation of State, County and Municipal Employees (AFSCME) had indicated they would go back to work on Tuesday, October 3, for seven days in an attempt to end the walkout.

According to a memo posted on the ATU's website and attributed to ATU International President Jim LaSala, Neil Silver, president and business agent of ATU Local 1277, asked his members to cross UTU picket lines to honor a commitment made to California Gov. Gray Davis.

In the memo, LaSala said that "ATU, AFSCME, TCU and UTU all agreed that if Gov. Davis signed the Transit Zone Bill, Senate Bill 1101, their members would return to work for up to seven days while negotiations continued."

"The UTU never committed to such a deal, nor did anyone acting on the UTU's behalf make any such commitment," said Little. "UTU members should be proud of General Chairperson James A. Williams, who knows what unionism is all about, and would never enter into any kind of agreement that would violate the sanctity of the picket line."

"As far as I can determine," Little continued, "the scenario outlined on the ATU's website has absolutely no basis in truth."

Little said that in recent conversations with International President Robert A. Scardelletti of the Transportation Communications International Union, he was assured the TCU made no such commitments, and would never consider crossing another union's picket lines.

Little also noted that he spoke with ATU's LaSala, who confirmed to him that an ATU lobbyist had entered into such an agreement and had made the commitment to Gov. Davis.

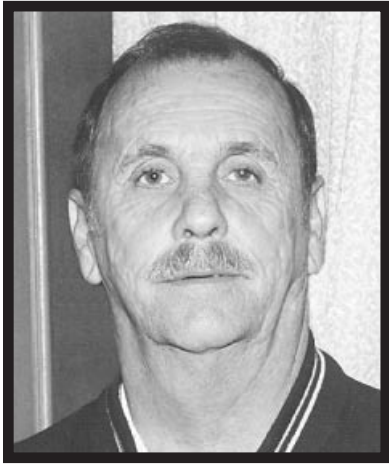
The ATU represents about 1,860 MTA mechanics, and AFSCME represents around 490 MTA maintenance and operations supervisors.

The legislation signed into law by Gov. Davis on Saturday, September 30, was similar to a proposal he had vetoed last year. Sponsored by Sen. Kevin Murray (D-Culver City), the law requires that newly created transit zones carved from existing transit authorities abide by all pre-existing labor contracts.

According to reports, mechanics and drivers were stunned by the news that ATU and AFSCME had requested its members to return to work, and the move created widespread anger within union ranks.

Many union members learned about the move through radio or television reports, and said they considered that a breach of union protocol. That point was driven home by UTU's Williams, who said he would never take an action like that without polling his members.

Voices: What circumstances would justify crossing a picket line?



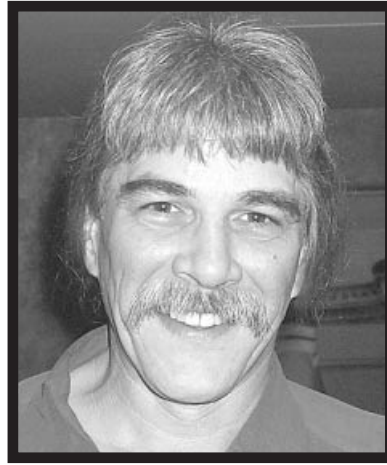
Robert Mortvedt
L-1563, El Monte, Cal.

"I've been a bus operator with the Los Angeles MTA for nearly 34 years, and I'm a vice division local chairperson. It's hard to say when a picket line should ever be crossed, but I think it depends on the issues and what's at stake. If MTA management did to the ATU what they've done to us, I wouldn't cross the ATU's picket lines. I don't think anyone should cross ours. But I don't think you should be held out of work for something stupid. I think you could cross the line if the union isn't negotiating in good faith, or if they're holding out for something completely ridiculous."



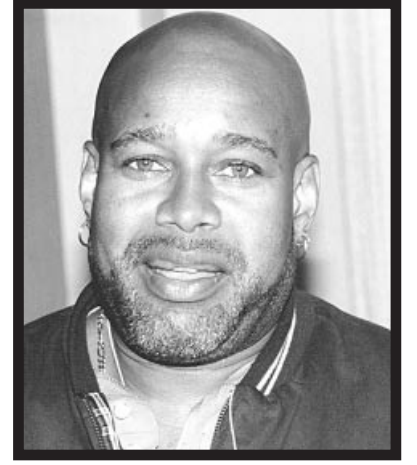
Tim Harrigan
L-168, Chicago, Ill.

"I'm an Amtrak conductor working a yard job as assistant conductor, and I'm a local president. I've been in the industry for 24 years, and my feeling is that under no circumstances would I cross a picket line. I feel like every union organization should respect and stand behind another's strike. A strike is the ultimate weapon of organized labor, and for it to be effective, no one should cross the line. We're supposed to be standing together. That's how you win. When you divide, you weaken. It undermines the strength and integrity of what a union is all about. Together, you can get through it. That's the bottom line."



James Chapman III
L-924, Richmond, Va.

"Unless my general chairperson or the UTU International advised me that there's been a settlement, I see no justification for ever crossing a picket line. I'm a local chairperson for road, yard and UTU-E, working now for CSX as a yard foreman. I remember when the BLE crossed UTU lines at the Soo Line, and it left a bitter taste in my mouth. So much today is about what's best for 'me,' but in a union, you have to use the word 'we,' and you have to do what's right for 'us.' People entering the work force need to know the history of the labor movement to understand the value of sticking together."



Vic Robertson
L-1565, W. Hollywood, Cal.

"I'm a vice local chairperson representing rail workers on the Los Angeles MTA. I've operated trains for six years, and before that I operated buses for 16 years. I don't think there are any circumstances that would justify crossing a picket line. Individually, you don't stand much of a chance against big business and deep pockets. When you become a part of a group, that's where your loyalties should lie. If you are a member of a labor union, that should prohibit you from crossing another's picket line. My principles would not allow me to do it. It's not easy to do, but you have to be principled."

Pensions

Continued from page 1

sands of railroaders who are looking forward to a well-deserved early retirement, the Republican Caucus stood with these three senators."

Gramm said, in effect, "that killing this legislation was something that the Republican senators should be able to campaign on," Brunkenhoefer said.

"In addition, we were told that some Republican senators did not want to pass this legislation because they wanted to 'leave money on the table' so it could be credited for a possible George W. Bush tax cut, if he is elected president," Brunkenhoefer said.

In another affront, the Republican House leadership, in a behind-the-scenes deal, included in a tax measure the carriers' long-sought 4.3-cent-per-gallon diesel fuel tax cut.

"This is insulting to every railroad worker, everyone who receives a rail pension, every family who survives on a railroad paycheck," UTU International President Charles L. Little said.

"When you enter the voting booth on November 7, don't forget that Republicans killed H.R. 4844. If the Republicans in Congress cannot convince their majority leadership to support the will of the people, then it is time to elect those who will," Brunkenhoefer said.

Monthly winner

This month's lucky winner of his choice of any item of apparel bearing the UTU logo is **Bartley C. Joyce** of Local 898, Boston, Mass., which represents workers on Amtrak. These items are awarded every month by random drawing as a show of appreciation to the many members who have been supportive of the UTU throughout the years.

State directors

Continued from page 5

recently passed in North Dakota, that regulates the companies that transport our members," Brickey said. "Right now, these companies are pretty much free from any oversight."

The association also examined the need for a system to coordinate the efforts of the UTU's state legislative directors.

"If Michigan runs into a roadblock getting van-service legislation passed, we need to alert all our other directors who may run into similar trouble," he said. "We also need to set up a plan that enables our membership to let us know what

they want us to proceed on and get this information to President Little as soon as possible."

The group heard from several lawmakers and government officials. Congressman Neil Abercrombie of Hawaii and David Bonior of Michigan spoke about the Railroad Retirement legislation, and Surface Transportation Board Chairperson Linda Morgan discussed railroad mergers and the effects of the Conrail acquisition by CSX and Norfolk Southern. Francis J. Duggan, the newest member of the National Mediation Board, also addressed the group.

Brickey said that Morgan told the association the STB would "put the hammer down" on any new rail mergers until those railroads could get a handle on things.

The directors also discussed railroads' attempts to challenge state lawmakers who are routinely passing legislation to penalize the railroads for blocking grade crossings, and how this could affect UTU members.

Brickey said that federal judges in Michigan and Indiana have ruled that states have no jurisdiction in this area. However, Michigan Attorney General Jennifer Granholm is appealing the ruling there.

The FRA has no regulations pertaining to blocked crossings, said Brickey, "and if railroads are allowed to block crossings at any time for as long as they desire, it will definitely have an effect on our members and could promote the use of remote-controlled operations."

"Some municipalities are now asking Congress to pass laws ensuring their right to regulate and enforce grade-crossing legislation," Brickey said. "They [railroads] may have opened a can of worms they didn't want to open."

After the meeting, a seminar was held to instruct newly elected directors on the responsibilities of their office.



National Mediation Board member Francis J. Duggan was one of the speakers who addressed the UTU's state legislative directors during their quadrennial reorganization meeting held in Washington, D.C.

UTU News

Senior News

Career's challenges came with Conrail

He was probably the right man, in the right place, at the right time, and when the times changed, it coincided with his time to move on.

Charles D. "Charlie" Winebrenner, a member of Local 860, Middleport, Ohio, recently retired after 41 years of rail service. He had served as general chairperson of the Conrail North General Committee of Adjustment (GO-651) from 1983 to 1999.

Prior to that, he had been serving as vice general chairperson of the former New York Central (NYC) Western District General Committee of Adjustment for eight years.

It fell to Brother Winebrenner to deal with the fallout that resulted from the creation of Conrail. And as he reached retirement age, an era drew to an end with the division of Conrail between CSXT and Norfolk Southern.

"At one time, my committee was the largest in the U.S., with 103 local chairpersons, and about 6,500 members," Winebrenner noted. "Because of consolidations, what we faced, over and over again, were equity problems."

One of the stickiest involved the end of the Erie Lackawanna. "Our constitution says prior rights should be protected. When you have rights, but no railroad, you've got a big problem."

Ironically, the situations that deprived him of sleep and appeared impossible gave rise to moments of great satisfaction, "especially when I was able to fix a problem for a member," Winebrenner said.

A member of a joint UTU/BLE unification panel in the 1980s, a two-time head of the General Chairpersons' Association, a convention delegate, and a father to two daughters and a son, Winebrenner began his career as a brakeman and a member of the Brotherhood of Railroad Trainmen in 1959 on the former NYC Ohio Central Lines at Hobson, Ohio.

At the end of 41 years of service, he had learned "humbleness, patience and understanding in a way that could only come about by dealing with the enormous problems presented by Conrail," he said.



C.D. Winebrenner

RRB, Social Security COLAs, Medicare Part B to rise in 2001

Social Security and Railroad Retirement Tier I benefits are scheduled to rise 3.5%, and Railroad Retirement Tier II benefits will increase 1.1% next year, the largest increase under the nation's retirement system in nearly a decade, federal officials said.

At the same time, Medicare Part B premiums, now at \$45.50 a month, will rise to \$50 a month in 2001, according to the Health Care Financing Administration.

Tier II benefits are adjusted by 32.5% of the change in the Consumer Price Index (CPI).

Vested dual benefit payments and supplemental annuities also paid by the U.S. Railroad Retirement Board (RRB) are not adjusted for the rise in the CPI.

The average Railroad Retirement employee annuity will rise \$37 a month to \$1,418, and the average combined benefits for an employee and spouse will increase \$53 a month to \$2,043. For aged widow(er)s, the average survivor annuity will rise \$25 a month to \$851, the RRB said.

For Social Security beneficiaries, the average monthly benefit amount for all retired workers will rise from \$816 to \$845. The maximum federal SSI monthly payments to an individual will rise from \$512 to \$530.

Like Social Security benefits, Tier I and vest-

ed dual benefits paid to employees and spouses, and Tier I, Tier II and vested dual benefits paid to survivors may be subject to deductions if post-retirement earnings exceed certain exempt amounts.

Under legislation enacted in April 2000, the retirement earnings test no longer applies to people above the normal retirement age (NRA). The NRA is age 65 for those born before 1938, and it will gradually increase to age 67. One of two different exempt amounts apply, depending on the year an annuitant attains normal retirement age (NRA).

For those who attain the NRA in 2001, the exempt amount is \$25,000. Otherwise the exempt amount in 2001 is \$10,680.

The board withholds \$1 in benefits for every \$2 of earnings in excess of the lower exempt amount, and withholds \$1 in benefits for every \$3 of earnings in excess of the higher exempt amount. Earnings in or after the month of NRA attainment do not count toward the retirement test.

Retired employees and spouses, regardless of age, who work for their last pre-retirement nonrailroad employer are also subject to an earnings deduction, in their Tier II and supplemental benefits, of \$1 for every \$2 in earnings up to a maximum reduction of 50%.

Alaskan cruise offers maximum flexibility

The UTU Travelers Club has arranged an Alaskan Cruise experience that offers members maximum flexibility.

Those who choose the seven-night, northbound *Voyage of the Glaciers* will leave Vancouver on May 21, 2001, in luxury aboard Princess Cruise Lines' Ocean Princess. Travelers will cruise the Inside Passage, arriving at such ports-of-call as Ketchikan, Juneau and Skagway, and then visit Glacier Bay and College Fjord. Cabin prices range from just \$879 to \$1,799.

For those who don't want it to end, the deluxe *Wilderness Package* extends the experience another seven days, taking travelers to

the Kenai Princess Wilderness Lodge and the Alaska Native Heritage Center, with a ride aboard Ultra Dome rail cars to Denali, and a fabulous stay at the Fairbanks Princess Riverside Lodge.

The deluxe *Wilderness Package* costs just \$2,279 to \$3,179 (all prices per person, based on double occupancy).

For complete information, a color brochure, and help in deciding just how deluxe or economical you want it to be, call toll free (888) 280-7657, phone (440) 748-2777 from Canada, write to Lynn Westphal Tours, 8715 Timber Edge Dr., N. Ridgeville, OH 44039, or send e-mail to <lwestphal2@aol.com>.

THE FINAL CALL

Following are the names of members of the UTU Retiree Program who have died recently, according to reports received at UTU International Headquarters. These brothers and sisters will be missed by their many friends and by fellow UTU Retiree Program members.

Local	Name	City/State	Local	Name	City/State	Local	Name	City/State	Local	Name	City/State
83	Lanier, Marvin E.	Jacksonville, TX	511	Portwood, Oscar L.	Snellville, GA	950	Crittendon, R.A.	Memphis, TN	1382	Czarapata, Erwin R.	Iron Mtn., MI
194	Cox, Edwin L.	Logansport, IN	565	Suey, James R.	Centralia, IL	977	Ingram, Lewis B.	Yakima, WA	1518	Malooley, Moses F.	Terre Haute, IN
256	Rocque, Charles A.	Troy, NY	586	Vestal, Fred D.	Marion, OH	977	Winkler, B.H.	Soap Lake, WA	1529	Drago, William C.	Lady Lake, FL
311	Stahl, Charles F.	Winona, MN	596	Harandin, Joe J.	Cranesville, PA	1043	Poe, Gene N.	Carlin, NV	1548	Sosbey, Richard T.	Indianapolis, IN
313	Posthumus, R.T.	Grand Rapids, MI	605	Cano, Robert G.	Clarksburg, WV	1062	Easley, Jr., S.H.	Peach Creek, WV	1563	Weaver, James W.	Gastonia, NC
316	Williamson, A.D.	Marshalltown, IA	623	Waddell, Jr., W.T.	Eagle Rock, VA	1177	Buckman, Roger M.	Hawley, MN	1574	Lenzer, Frank	Portland, OR
330	Fulks, Thomas R.	Poplar Bluff, MO	683	Weger, Werner H.	Dearborn Hts., MI	1177	Cahill, William F.	Fargo, ND	1590	Cramblett, Robert S.	Mesa, AZ
331	Clouse, James H.	Temple, TX	693	Grizer, Henry J.	Canal Fulton, OH	1186	Rogers, W.W.	Michigan City, IN	1687	Leatherman, Arnol E.	Raton, NM
349	Fulton, Richard J.	St. Joseph, MO	694	Shields, Harold	Dunsmuir, CA	1245	Snyder, Ernest B.	Cornelia, GA	1687	Sparks, Ray P.	Ophir, OR
385	Foley, Timothy J.	W. Haven, CT	781	Dowden, Johnny L.	Shreveport, LA	1290	Cobb, Henry A.	Chicago Hts., IL	1770	Debaun, Gilbert N.	Anaheim, CA
462	Latner, Lawrence T.	Ashdown, AR	904	Bruce, Thomas E.	Nortonville, KY	1313	Martin, Joe S.	Amarillo, TX	1908	Frazier, Evelyn	Buffalo, NY
477	Mull, Eugene C.	Newton, KS	924	Rollings, Robert K.	Palm Coast, FL	1374	Kellar, C.A.	Berlin Hts., OH			

T P E L H O N O R R O L L

Honoring members who have begun contributing to TPEL or increased their donations to \$100 or more per year within the last two months.

Name	Local City	Name	Local City	Name	Local City	Name	Local City	Name	Local City
PLATINUM CLUB (\$1,200 OR MORE PER YEAR)		DIAMOND CLUB (\$300 OR MORE PER YEAR)		Rodgers, Harold E. 281 Milwaukee, WI		Stacy, Joseph S. 770 Heavener, OK		Worthy, Charles R. 970 Abbeville, SC	
Price, John W. 78 Pocatello, ID		*Johnson, Ronald R. 239 Oakland, CA		Vatistas, Jim D. 281 Milwaukee, WI		Abernathy, Billy E. 781 Shreveport, LA		Martson, David D. 997 Enola, PA	
Koestner, Larry W. 329 Boone, IA		Derue, Donald R. 281 Milwaukee, WI		Smith, Stephen W. 283 Portland, OR		Bell Jr., Crawford 781 Shreveport, LA		Payne, John D. 1011 Hamlet, NC	
Carnathan, Stephen A. 598 Mobile, AL		Jarsiewicz, Edward P. 281 Milwaukee, WI		Ady, John D. 286 North Platte, NE		Cannon, Brian J. 781 Shreveport, LA		Cherry, Christopher L. 1016 Enid, OK	
Clements, Ronald R. 622 Birmingham, AL		Termini, J.M. 281 Milwaukee, WI		*Blake, Gene F. 293 Houston, TX		Cauthron, B. J. 781 Shreveport, LA		*Johnson, Rupert 1031 Savannah, GA	
Snow, Robert W. 1088 Jackson, MS		Uytbroeck, Daniel B. 281 Milwaukee, WI		Peterson, Jeji W. 311 La Crosse, WI		Delton, Quincey D. 781 Shreveport, LA		Humann, Jerome J. 1137 Fargo, ND	
O'Neal, G. Michael 1532 Kansas City, KS		Atkinson, G. Michael 283 Portland, OR		Westby, John L. 322 Milwaukee, WI		Drew, Russell L. 781 Shreveport, LA		Robinson Sr., Kenneth 1190 Ludlow, KY	
		Nelson, James E. 311 La Crosse, WI		Bryson, Ronnie M. 338 Chattanooga, TN		Epps, Michael L. 781 Shreveport, LA		Piero Sr., Isaac A.M. 1241 Richmond, CA	
DOUBLE DIAMOND CLUB (\$600 OR MORE PER YEAR)		Mees, Kim R. 486 Glendive, MT		Springer, Jayson Scott 376 Louisville, KY		Hall, James T. 781 Shreveport, LA		Frakes, Danny A. 1290 Chicago, IL	
Nierling, Thomas F. 202 Denver, CO		Smith, Timothy J. 586 Willard, OH		Brady, Jon L. 421 Conneaut, OH		Hardy, Weber E. 781 Shreveport, LA		Hodges Jr., Winston C. 1290 Chicago, IL	
Joslin, Leroy R. 281 Milwaukee, WI		Szalawiga, Jerry J. 627 Wymore, NE		Broyles, Stephen W. 473 La Grande, OR		Hall, James T. 781 Shreveport, LA		Debardelaben, Franklin 1291 Birmingham, AL	
Simpkins, Randall B. 622 Birmingham, AL		Romig, Michael J. 730 Great Falls, MT		Denny, Jeffrey D. 473 La Grande, OR		Manuel, Tyler B. 781 Shreveport, LA		Alfonsi, Todd 1313 Amarillo, TX	
Matthews, James T. 656 N. Little Rock, AR		Boles, Harvey D. 750 Knoxville, TN		Larsen, Robert J. 473 La Grande, OR		Auboy, Sam K. 781 Shreveport, LA		Cantu, Johnny I. 1313 Amarillo, TX	
Loucks, Stephen W. 947 Chaffee, MO		Ruffins, Michael L. 781 Shreveport, LA		Malone, Herschel D. 473 La Grande, OR		Pillette Jr., Jesse A. 781 Shreveport, LA		Counts, Michael J. 1313 Amarillo, TX	
Mateer, John L. 1379 Pittsburgh, PA		Sandlin, Steve P. 781 Shreveport, LA		Marshall, Lane R. 473 La Grande, OR		Scogin Jr., James O. 781 Shreveport, LA		McKinney, Jason L. 1313 Amarillo, TX	
Schlosser, Donald D. 1532 Kansas City, KS		Kester, Todd S. 845 Seattle, WA		Marshall, Larry A. 473 La Grande, OR		Sowles, Brenda F. 781 Shreveport, LA		Moneyham, Cory 1313 Amarillo, TX	
		Kennedy, Gary S. 965 Dallas, TX		Orcutt, Wallace S. 473 La Grande, OR		Thomas, Robert A. 781 Shreveport, LA		Frakes, Ben G. 1313 Amarillo, TX	
DIAMOND PLUS CLUB (\$400 OR MORE PER YEAR)		*West, Ernest 974 Nashville, TN		Kilmer, James R. 477 Newton, KS		Williams III, Walter 781 Shreveport, LA		Poulain, Jay P. 1313 Amarillo, TX	
Beetschen, Barry P. 281 Milwaukee, WI		Foley, Stephen W. 977 Pasco, WA		Shelton, Neal J. 486 Glendive, MT		Sago, Thomas J. 891 Whitefish, MT		Robertson, Leonard W. 1313 Amarillo, TX	
Cunningham, J.M. 281 Milwaukee, WI		Marshall, Gregory B. 1245 Atlanta, GA		Caudill, Eric D. 496 Portsmouth, OH		Torgerson, Darrin K. 891 Whitefish, MT		Smith, Stephen B. 1313 Amarillo, TX	
Doyle, Michael R. 281 Milwaukee, WI		Gabel, Edwin P. 1313 Amarillo, TX		Nunley, Raymond P. 496 Portsmouth, OH		Appell, Thomas Richard 904 Evansville, IN		Spikes, Russell C. 1313 Amarillo, TX	
Malone, Dennis L. 281 Milwaukee, WI		Heck, Derek J. 1313 Amarillo, TX		Bankston, George K. 508 Smithville, TX		Appell, Todd A. 904 Evansville, IN		Britski, Michael D. 1379 Pittsburgh, PA	
Massy, Danny J. 847 Birmingham, AL		Pierce, Jonathan D. 1316 Ravenna, KY		Frazier, Michael D. 508 Smithville, TX		Austin, Dana S. 904 Evansville, IN		Ruffner, Michael C. 1379 Pittsburgh, PA	
		Voke, Niklaus D. 1405 St. Louis, MO		Helgren, Edwin C. 508 Smithville, TX		Douglas, Harold T. 904 Evansville, IN		Freeze, Larry E. 1388 St. Louis, MO	
DOLLAR-A-DAY CLUB (\$365 OR MORE PER YEAR)		Schweiss, Richard 1433 Elmwood Park, IL		Karisch Jr., Ernest W. 508 Smithville, TX		Ellsworth, David D. 904 Evansville, IN		Kosednar, Gary E. 1388 St. Louis, MO	
Hollbrook, Robert L. 194 Elkhart, IN		*Cutter Jr., W. W. 1501 Baton Rouge, LA		Lastovica, David D. 508 Smithville, TX		Foster, Donald A. 904 Evansville, IN		Auboy, Sam K. 1388 St. Louis, MO	
Braswell, Wesley A. 281 Milwaukee, WI		Mills, Robert G. 1912 Mobile, AL		Leiferman, Richard L. 508 Smithville, TX		Leemons, Brett A. 904 Evansville, IN		Steffan, Ronnie L. 1388 St. Louis, MO	
Beetschen, Karl W. 281 Milwaukee, WI		Moffet Jr., Ted W. 1912 Mobile, AL		Machala, Edward J. 508 Smithville, TX		Melton, Jason P. 904 Evansville, IN		Strebeck, August L. 1388 St. Louis, MO	
Breitsprecker, Henry J. 281 Milwaukee, WI				Saunders, Larry S. 508 Smithville, TX		Mills, James H. 904 Evansville, IN		*Devine, Thomas J. 1390 Trenton, NJ	
Lawson, Michael G. 281 Milwaukee, WI		GOLD CLUB (\$100 OR MORE PER YEAR)		Saunders, Nathan L. 508 Smithville, TX		Muensterman, Stephen 904 Evansville, IN		Esposito, Thomas M. 1413 Jersey City, NJ	
Loerzel, Scott E. 281 Milwaukee, WI		Moats Jr., James W. 5 Kansas City, MO		Tiner, Randy F. 508 Smithville, TX		Niethammer, William J. 904 Evansville, IN		Pokaluk, David L. 1403 Kansas City, MO	
Sullivan, Michael J. 281 Milwaukee, WI		Holman Sr., Peter A. 6 Indianapolis, IN		Vinklarek, Gregory F. 508 Smithville, TX		Peay, Randy 904 Evansville, IN		Bortko, Frank M. 1433 Elmwood Park, IL	
Baxter, Ralph C. 469 Madison, IL		*Hunter, Henry L. 48 Norfolk, VA		Ward, David S. 508 Smithville, TX		Renaud, Cameron S. 904 Evansville, IN		Kneip, Michael J. 1433 Elmwood Park, IL	
Hanson, Delmer E. 473 La Grande, OR		*Chadwick, Lawson L. 84 Los Angeles, CA		Wood Jr., Willard O. 508 Smithville, TX		Rice, Gene R. 904 Evansville, IN		Parra, Andrew J. 1433 Elmwood Park, IL	
Caldwell, Ronald G. 565 Centralia, IL		Howrey, William W. 100 Indianapolis, IN		Young, Charles D. 508 Smithville, TX		Schneider, Robert E. 904 Evansville, IN		Shepard, Levon E. 1433 Elmwood Park, IL	
Taylor, Robert E. 565 Centralia, IL		Armstrong, Charles H. 113 Winslow, AZ		Zigal, Dennis W. 508 Smithville, TX		Seidl, Trent V. 904 Evansville, IN		Tubbs, James M. 1433 Elmwood Park, IL	
Corrigan, Robert K. 730 Great Falls, MT		Donald, Brian L. 161 Seattle, WA		*DuBose, G. Thomas 535 Macon, GA		Vogel, Edward L. 904 Evansville, IN		Watson, Jeriwyn R. 1433 Elmwood Park, IL	
Turner, Harold C. 762 Montgomery, AL		Hayes, James D. 199 Creston, IA		Geldard, Mickey W. 544 Havre, MT		Willman, Melvin J. 904 Evansville, IN		Melvin, Terrence O. 1494 Chicago, IL	
Moultrie, Robert R. 772 Sheffield, AL		Heinzel, Dennis R. 199 Creston, IA		May, Jeremy S. 544 Havre, MT		Lachman, Jerome J. 911 Minneapolis, MN		Dupont, Charles D. 1501 Baton Rouge, LA	
Wynn, Josh 781 Shreveport, LA		Snyder, Richard A. 199 Creston, IA		Petersen, Fredrick W. 544 Havre, MT		Daniels, Jerry L. 934 Alliance, NE		Sanders Jr., Phillip M. 1532 Kansas City, KS	
Black, John W. 1245 Atlanta, GA		Vicker, Randy L. 199 Creston, IA		Cockrum, Kenneth D. 565 Centralia, IL		Barrineau, Rony D. 942 Florence, SC		Taylor, William D. 1532 Kansas City, KS	
Leslie, B.L. 1290 Chicago, IL		White, Ronald D. 199 Creston, IA		Henrichs, Stephen M. 565 Centralia, IL		Meetze, Bobby H. 942 Florence, SC		Greger, Daniel R. 1538 Chicago, IL	
Cheao Jr., Salvador 1290 Chicago, IL		Weidmaier, David A. 259 St. Joseph, MO		Murphy, Monty R. 565 Centralia, IL		Galvan Jr., Albert 953 Victoria, TX		Jensen, Brett L. 1554 Ogden, UT	
Schwieger, Donald E. 1290 Chicago, IL		Libby Jr., Garry H. 262 Boston, MA		Murray, Todd M. 565 Centralia, IL		Gonzales, Romel 953 Victoria, TX		Acosta Jr., Corby A. 1836 New Orleans, LA	
Gross, Kurtis R. 1402 Dupo, IL		Ryan, Kevin M. 262 Boston, MA		Nordman, Brett 582 Stevens Point, WI		Weston, Wayne T. 953 Victoria, TX		Adams, Frederick E. 1836 New Orleans, LA	
Hutcheson, Dirk A. 1403 Kansas City, MO		Borowy, Joseph K. 265 Pocatello, ID		Reichhoff, Lee A. 582 Stevens Point, WI		Bird, James A. 965 Dallas, TX		Goldman, Robert R. 1857 Green River, WY	
Kinne, Andrew L. 1403 Kansas City, MO		Brandenburger, Barry S. 281 Milwaukee, WI		Schamberger, Robert M. 582 Stevens Point, WI		Brewer Sr., William H. 965 Dallas, TX		Osterling, J. Brad 1857 Green River, WY	
Hillebrand Jr., Richard J. 1433 Elmwood Park, IL		Foster, James G. 281 Milwaukee, WI		Rottari, Donald M. 586 Willard, OH		Partain Jr., Lonnie E. 965 Dallas, TX		Webb, Darrel G. 1887 Fairfield, AL	
Bevacqua, Eugene F. 1505 Spokane, WA		Goodnow, Paul F. 281 Milwaukee, WI		Hilden, Michael J. 590 Portage, WI		Reyna, Gerraldo V. 965 Dallas, TX		Lopez, Vincent A. 1895 Chicago, IL	
Debaun, William J. 1532 Kansas City, KS		Grass, Robert L. 281 Milwaukee, WI		Wilkinson, James C. 627 Wymore, NE		Shaw, Warren B. 965 Dallas, TX		Francis Jr., Clarence J. 1947 Lake Charles, LA	
Jefferson, Arnold C. 1678 Minden, LA		Jensen, Eric C. 281 Milwaukee, WI		Hayes, Randall J. 643 Ft. Madison, IA		Smith III, Howard D. 965 Dallas, TX		*Slinkard, Anita R. Oakridge, MO	
Thornberry, James K. 1709 Pontiac, MI		Kiesgen Jr., Donald K. 281 Milwaukee, WI		Main, Thomas L. 643 Ft. Madison, IA		Smith, Scott 965 Dallas, TX			
Thompson, Steven J. 1709 Pontiac, MI		Miles, David J. 281 Milwaukee, WI		Brown, Michael 730 Great Falls, MT		Talladino, Nicholas A. 965 Dallas, TX			
Harden, Gordon K. 1887 Fairfield, AL		Pratt, Lon W. 281 Milwaukee, WI		Williams, Ronald H. 730 Great Falls, MT		Wood, Raymond L. 965 Dallas, TX			

* = Retired Member

United Healthcare open enrollment in December

During the month of December 2000, UnitedHealthcare will hold an open enrollment under GA-23111.

During this open enrollment, any individual eligible for coverage under one of the GA-23111 plans can enroll and will be accepted for coverage without any medical underwriting or requirement of good health.

There are no limitations on pre-existing conditions.

If you enroll in December 2000, you will be covered effective January 1, 2001.

Only those applicants who mail their enrollment form in December 2000 will be considered for open enrollment.

This open enrollment is being held:

- For persons already enrolled in GA-23111 who want to change their coverage from Plan D to Plan F (which has no prescription drug coverage) or from Plan F to Plan D. The next opportunity to change plans will be December 2002.

- For any individual who was covered under any railroad health plan and was represented by a railway labor union. Previously, only individuals covered under GA-23000, GA-107300 or GA-46000 were eligible to enroll under GA-23111.

If someone you know meets the new GA-23111 eligibility provisions, open enrollment provides an opportunity to become covered.

You may also enroll your spouse or eligible children if they are not currently covered.

In addition, open enrollment under Plans D or F is available for your parent or parent-in-law. Anyone interested in enrolling should call the following phone numbers to obtain an enrollment form or get additional information:

For persons eligible for Medicare, call (800) 809-0453.

For persons not eligible for Medicare, call (800) 842-5252.

The next open enrollment will be December 2002.

UTUIA seeks 2001 Volunteer of the Year

The United Transportation Union Insurance Association is looking for a special person to honor as its 2001 Volunteer of the Year.

Do you regularly volunteer at a hospital or nursing home? Do you lead a Boy Scout or Girl Scout troop or work with the handicapped? Are you involved in some other activ-

ity that benefits those in your community? If so, we would like to know about it.

A panel of judges at the UTU International will review all submissions and select the 2001 Volunteer of the Year. The individual selected as UTUIA Volunteer of the Year will receive a \$1,000 U.S. Savings Bond and

a plaque of appreciation from UTUIA. Additionally, he or she will be honored at the 2001 UTU/UTUIA Regional Meeting nearest his or her home (all expenses paid by UTUIA). Also, 20 runners-up will be selected to receive certificates of appreciation for their volunteer efforts.

Deadline for submission of nominations is February 28, 2001.

The outstanding individual will be notified by registered mail, and certificates of appreciation will be forwarded to runners-up as soon as possible. Decision of UTUIA judges is final. Previous nominees may be nominated again, however, former Volunteers of the Year are ineligible to receive awards.

The Volunteer of the Year program is designed to accomplish many things, not the least of which is the opportunity for UTUIA to let its fraternal light shine. It also provides an opportunity for UTUIA to recognize its volunteers for their outstanding contributions to others.

The nomination form should be mailed to: **UTUIA Volunteer of the Year, Attn.: Sandra Kranick, UTU/UTUIA Fraternal Coordinator, 14600 Detroit Ave., Cleveland, OH 44107-4250.**

Don't forget to include a separate sheet of paper describing your volunteer activities.

UNITED TRANSPORTATION UNION INSURANCE ASSOCIATION 2001 Volunteer of the Year Nomination Form

Name _____	Local _____
Address _____	
City _____	State _____ Zip _____
Telephone Number _____	Dates of Volunteer Activity _____
Total Volunteer Time (hours, minutes) _____	\$ _____
Weekly <input type="checkbox"/> Monthly <input type="checkbox"/>	Value of Contribution (if applicable) _____

Please attach separate sheet of paper describing volunteer activity.
The more documentation you can provide, the better.

11/00

UNITED TRANSPORTATION UNION INSURANCE ASSOCIATION, 14600 DETROIT AVE., CLEVELAND, OH 44107-4250.



UTU signs AT&T Wireless National Cellular Agreement

GREAT NEWS!! UTU recently signed a National Agreement with one of the largest cellular carriers in the United States, AT&T Wireless Services. This agreement benefits all corporate liability cellular lines and employee liability cellular lines of United Transportation Union. New and existing AT&T Wireless customers will earn airtime and equipment discounts.



less phone number, name, billing address and contact phone number.

New Service:

- Contact National Business Ordering (NBO): 1-800-388-3235.
- Request to activate "new service."
- Provide UTU's Employee Sponsorship Foundation Account # 11988
- Be prepared with the following information: name, billing address, contact phone number, social security number, date of birth, and drivers license number.

An AT&T representative will be able to assist you with selecting the most appropriate rate plan and telephone.

UTU and AT&T Wireless Services look forward to having you as part of this National Wireless Program.

Enrollment Process:

Existing Service:

- Contact National Business Ordering (NBO): 1-800-388-3235.
- Request to be added as an "existing subscriber" to the United Transportation Union Employee Sponsorship Program.
- Provide UTU's Employee Sponsorship Foundation Account # 11988
- Be prepared with the following information: wire-



NOVEMBER 2000

ISSN 0098-5937

Published monthly by the UNITED TRANSPORTATION UNION, 14600 DETROIT AVE., CLEVELAND, OH 44107-4250 • Periodicals postage paid at Cleveland, Ohio, and additional mailing offices • Charles L. Little, International President; Paul C. Thompson, General Secretary/Treasurer • This publication available on microfilm from UMI, 300 N. Zeeb Rd., Ann Arbor, MI 48106 • **POSTMASTER: Send address changes to UTU News, 14600 Detroit Ave., Cleveland, OH 44107-4250.**



Periodicals Postage
PAID at Cleveland, Ohio,
and additional
mailing offices



Please recycle

11/00

PARENTS...GRANDPARENTS...

This Christmas, Give a Gift that Will Last a Lifetime

Have you ever stopped to think about what you **could** have done with the money you spent on Christmas gifts in the past? If you're like most parents and grandparents, you go overboard. But what usually happens to those gifts? Do they end up in the corner, rarely played with — or worse yet, broken? Why not give your little ones a lasting gift this Christmas?



"The best thing I gave each of them was a paid-up \$25,000 life insurance policy."

- Willis G. Croonquist
Local 1177, Willmar, Minn.

Retired UTU member Willis G. Croonquist and his wife, Rita, pose for their annual Christmas photograph with their seven grandchildren. The Croonquists gave each of their grandchildren a gift that will last a lifetime: a paid-up, \$25,000 life insurance policy from the United Transportation Union Insurance Association.

Permanent life insurance is a wonderful way to provide a lifetime benefit for your youngsters. What better way to show them you care? Permanent life insurance is very inexpensive at young ages, and premium-paying choices are endless, since premiums can be paid in one easy payment or over just about any period of time you select. Give a gift that **keeps on giving** by returning the coupon below, or by calling toll-free, 1-800-558-8842, for assistance from your UTUIA representative.

Information, Please



I would like more information on UTUIA's ULTIMATE PAR policy. **Please Print.**

Full Name of Member _____		Sex _____	Date of birth _____
Address _____		City _____	State _____ Zip _____
Telephone Number with Area Code _____		UTU Local Number _____	

Please provide full name, sex, date of birth, and relationship of the child for whom the information is requested on the line below.

Full Name _____	Sex _____	Date of Birth _____	Relationship _____
-----------------	-----------	---------------------	--------------------

Complete and mail to: UTUIA Sales Dept., 14600 Detroit Ave., Cleveland, OH 44107-4250

11/00